

ANNEX G: AERODROME LOCATION AND CONTROL OF ENTRY AND ACCESS

Aerodrome Location

RAF Halton lies at the foot of the Chiltern Hills, approximately 3.5nm South-East of AYLESBURY. It sits underneath Luton Airport's controlled airspace and on the North-West edge of the London Terminal Maneuvering Area (TMA). RAF Halton's nearest rail links are Wendover (2 miles to the South) and Tring (5 miles to the East) The airfield at RAF Halton is accessed from Chestnut Avenue which runs North-West from Station HQ, through Halton Village.

NB: All visitors must report to the RAF Halton Guardroom on arrival. Parking is available near the Guardroom to enable you to do this. All visitors to RAF Airfield should be booked in by the host on Station prior to arrival. Photographic ID must be provided to enable issue of a pass which must be displayed at all times on the Airfield.

Local Area Maps



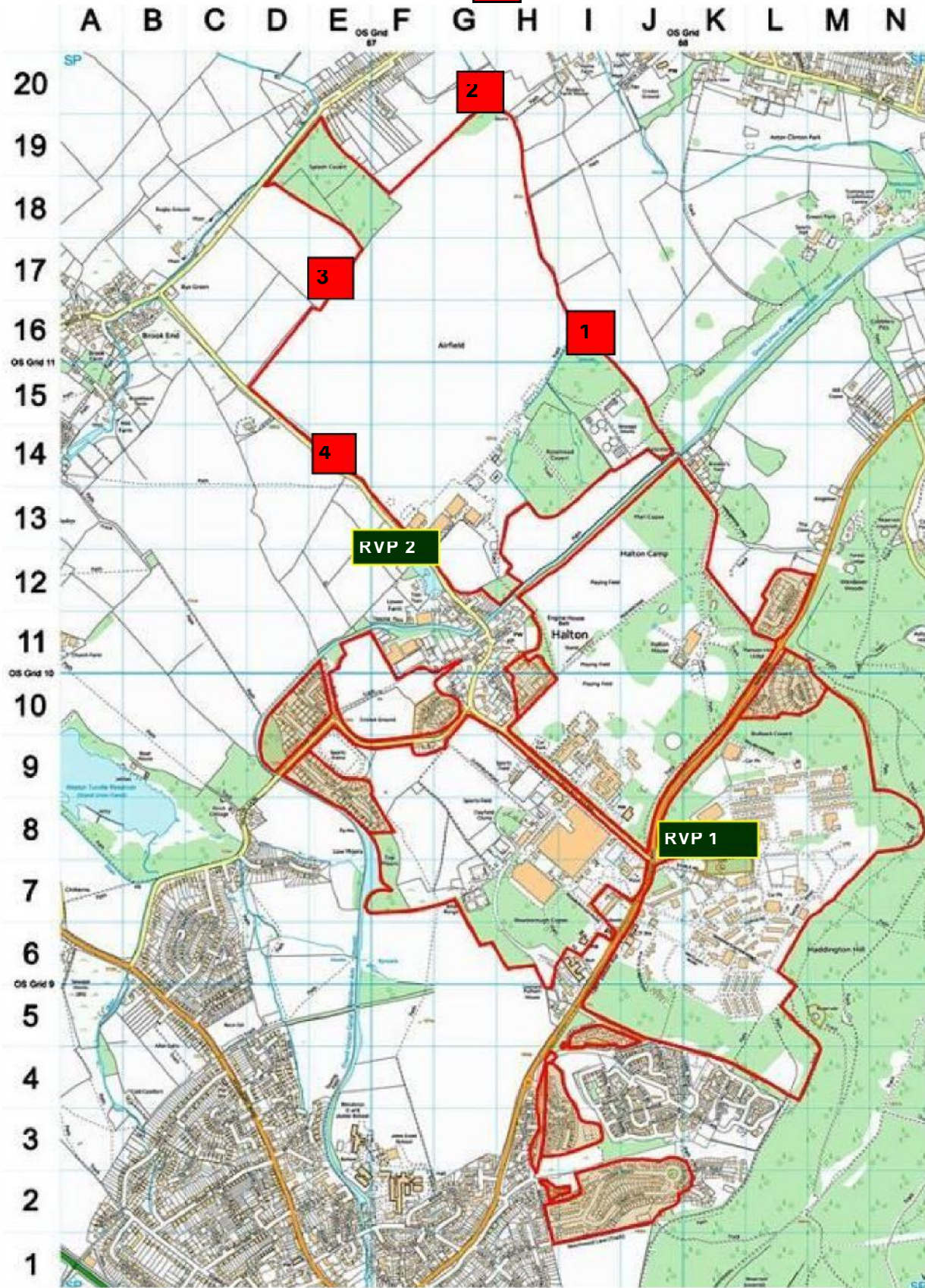
Figure 1.

The following OS map shows the RAF Halton runways in green, the Air Traffic Zone (ATZ) in red and some of the Luton Airspace in blue.



Figure 2.

Aerodrome Crash Map - Crash Gates = **X**, Rendez Vous Points = **RVP**



Gate	Grid Ref (WGS 84)	Latitude	Longitude
Crash Gate 1	SP 87659 11125	N 51° 47.491'	W 000° 43.730'
Crash Gate 2	SP 87375 11853	N 51° 47.884'	W 000° 43.971'
Crash Gate 3	SP 86869 11205	N 51° 47.532'	W 000° 44.438'
Crash Gate 4	SP 86847 10716	N 51° 47.274'	W 000° 44.444'
RVP 1	SP 87847 09265	N 51° 46.502'	W 000° 44.741'
RVP 2	SP 87188 10461	N 51° 47.022'	W 000° 44.333'

Figure 3.

Control of Entry and Access

RAF Halton Airfield is out of bounds to all vehicles, personnel and their dependents as shown in the diagram below, unless authorised by Ops Flt, on ext 6666 or 07771522083:-

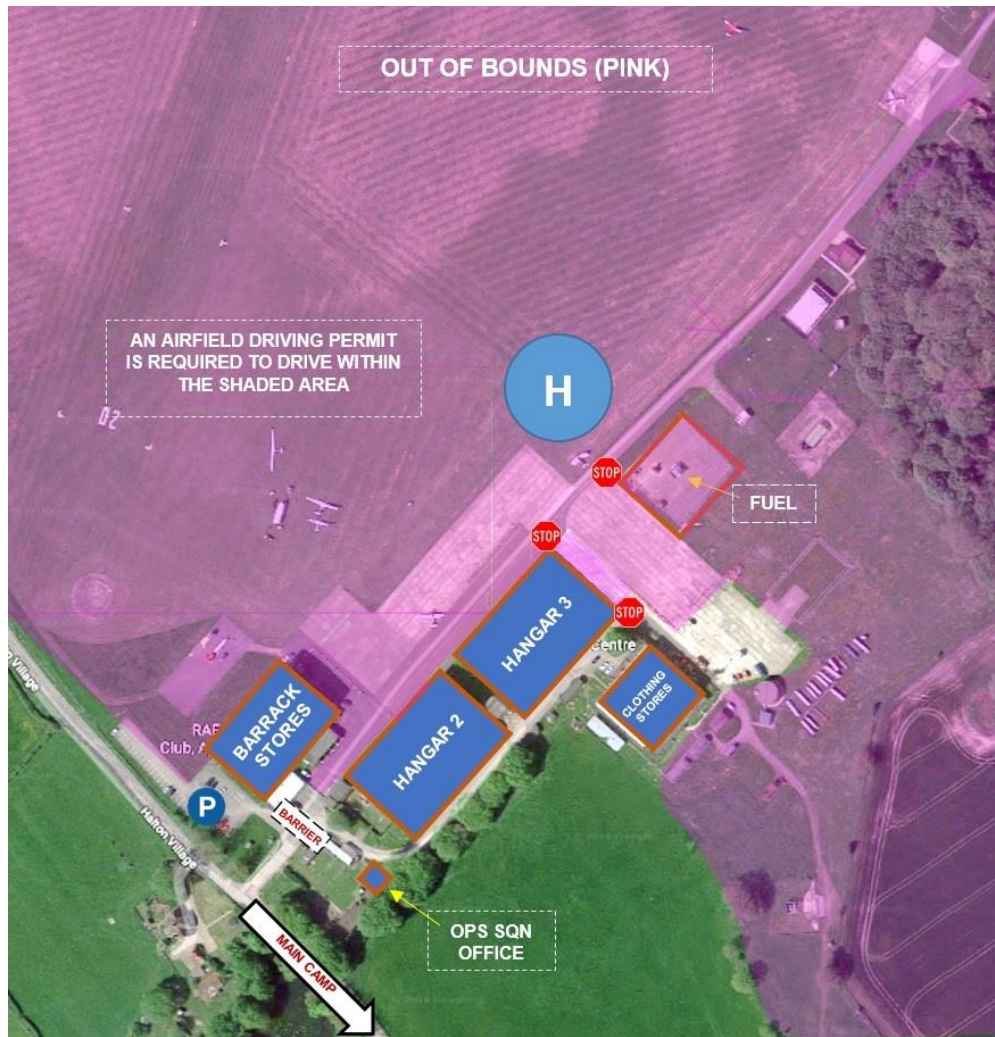


Figure 4.

Station personnel, dependents and visitors planning to visit the Airfield should familiarise themselves with the following Order from RAF Halton's SSOs:-

Order No 40 – Use of the Airfield

Reference:

- A. RAF Halton Aerodrome Order Book
- B. RAF Halton Defence Aerodrome Manual

1. Orders for Pedestrians, Dog Walkers, Cyclists and Runners. Hazards to pers and risks to life mean there is no entry to the Airside area at RAF Halton Airfield at any time; this includes the area in front of the Hangars and the road past the former Military Working Dog Section. For clarification or enquiries regarding the Airside area contact Ops Flt, Ext 6666.

2. Aerodrome Orders. All users of the RAF Halton Airfield are to comply with the RAF Halton Aerodrome Order Book (AOB) which is issued separately by Ops Flt but is available on the Stn Intranet. The OCs and OICs of the airfield organisations are to ensure that the AOB is available to their members and is located in a prominent position for easy access and reference. The AOB, and those local order books specific to the flying organisations within the AOB, is to be read and signed by all those who fly from RAF Halton before their first flight as Pilot in Command or for any changes thereafter. The AOB is to be signed for 6 monthly and when any change is made. The periodic signing of local order books specific to the flying organisations at RAF Halton is to be as required by those organisations.

3. New or Visiting Airfield Users. Pers who wish to use or access the airfield operating areas for the first time must be made aware of the hazards. This can be achieved by visiting Ops Flt for a brief; if there is nobody in the office please call 07771522083. Further, if they are to become an airfield user then they must conduct an induction briefing through the various airfield user organisations; pers wishing to drive on the airfield shall hold a valid Airfield Driving Permit available by pre-arrangement through Ops Flt. Finally, the airfield is a "Hats off" area for all hats with metal badges, which includes Service Headdress unless ordered otherwise through the Stn Cdr.